

## Ex-control stations - enclosures moulded plastic GHG 41 / 43



Type 411 81



Type 411 82



Type 432



Type 434

### 4 Technical data

#### Ex-control stations Type 41. and 43. for individual configuration

Marking accd. to 2014/34/EU	⊕ II 2 G Ex ed ib m IIC T6 <sup>1)</sup> ⊕ II 2 D Ex tD A21 IP66 T80 °C
EC-Type Examination Certificate	PTB 00 ATEX 3117 <sup>1)</sup>
IECEX Certificate of Conformity	IECEX BK1 04.0003 <sup>1)</sup>
Marking accd. to IECEx	Ex e II T6, Ex e ib IIC T6, Ex ed IIC T6 or Ex ed ib IIC T6 <sup>1)</sup>
Permissible ambient temperature	-20 °C up to +40 °C <sup>1)</sup> -55 °C up to +55 °C (option)
Rated voltage	690 V AC
Rated current	16 A
Connecting terminals	2 x 4 mm <sup>2</sup>
Protection class	I
Degree of protection accd. to EN 60529	IP66 (standard)
Enclosure material	Polyamide
Enclosure colour	black

#### Type 411 81

Cable glands/Gland plates/Enclosure drilling	Ex e cable glands max. 2 x M25; 2 x M20 thread
Dimensions (L x W x H)	85 x 85 x 77.5 mm
Weight (empty)	0.25 kg
Components arrangement	1 mounting area

#### Type 411 82

Cable glands/Gland plates/Enclosure drilling	Ex e cable glands max. 2 x M25; 2 x M20 thread
Dimensions (L x W x H)	125 x 85 x 77.5 mm
Weight (empty)	0.35 kg
Components arrangement	2 mounting areas

#### Type 411 83

Cable glands/Gland plates/Enclosure drilling	Ex e cable glands max. 2 x M25; 2 x M20 thread
Dimensions (L x W x H)	165 x 85 x 77.5 mm
Weight (empty)	0.45 kg
Components arrangement	3 mounting areas

#### Type 432

Cable glands/Gland plates/Enclosure drilling	Ex e cable glands max. 2 x M25; 3 x M20 thread
Dimensions (L x W x H)	156 x 100 x 90 mm
Weight (empty)	0.47 kg
Components arrangement	2 mounting areas

#### Type 434

Cable glands/Gland plates/Enclosure drilling	Ex e cable glands max. 2 x M25; 3 x M20 thread
Dimensions (L x W x H)	245 x 100 x 90 mm
Weight (empty)	0.70 kg
Components arrangement	4 mounting areas

<sup>1)</sup> Data for ready configured product



Type 434



Type 432



Type 411 82



Type 411 81

Ordering codes (Code 1)

1. Enclosure	2. Components arrangement/terminals				3. Labels/ padlocking facility	4. Cable glands
	Mounting area 1	Mounting area 2	Mounting area 3	Mounting area 4		
411 81 <sup>1)</sup>	X	-	-	-	X	X
411 82	X	X	-	-	X	X
411 83	X	X	X	-	X	X
432	X	X	-	-	X	X
434	X	X	X	X	X	X

Possible components (Code 1)

Component	Code	Component	Code
Pushbutton (2-pole or 4-pole <sup>2)</sup> )	DRT	Measuring instrument	AM72 <sup>2)</sup>
Double pushbutton (2-pole or 4-pole <sup>2)</sup> )	DDT	Measuring instrument	AM45
Key-operated pushbutton (2-pole or 4-pole <sup>2)</sup> )	SLT	Signal lamp	SIL
Key-operated switch (2-pole or 4-pole <sup>2)</sup> )	SLS	Potentiometer	POT
Control switch (2-pole or 4-pole <sup>2)</sup> )	SCT	Terminal block (4 mm <sup>2</sup> )	KLM
Mushroom-head pushbutton (2-pole or 4-pole <sup>2)</sup> )	SGT	Blanking element	BLV
Control switch	GHG 23 <sup>3)</sup>		

<sup>1)</sup> 4-pole component not possible

<sup>2)</sup> 2 mounting areas are needed

<sup>3)</sup> only for type 43., 2 mounting areas are needed

Ex-control stations - enclosures GHG 41 / 43



Type 411 81



Type 411 82

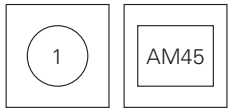


Type 432

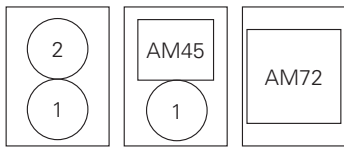
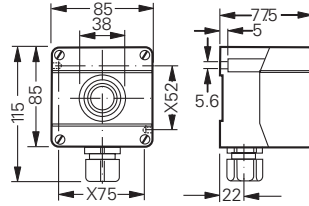


Type 434

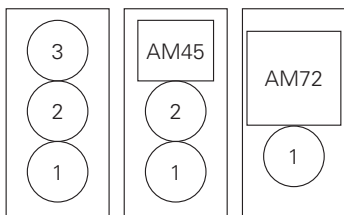
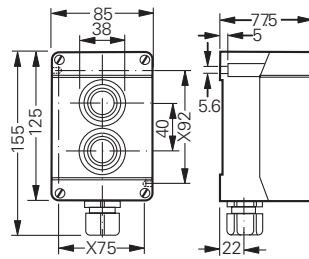
4 Mounting areas | Dimension drawing



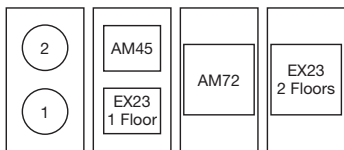
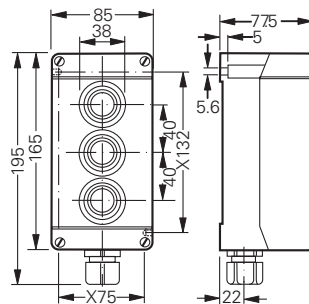
Type 411 81



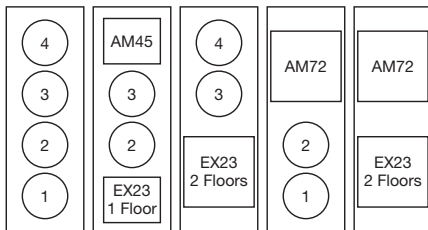
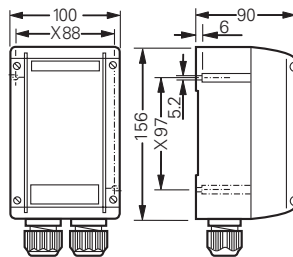
Type 411 82



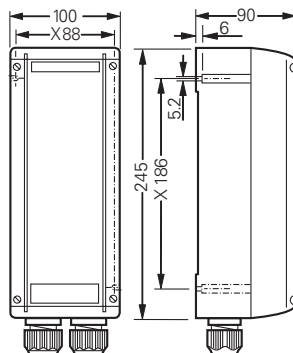
Type 411 83



Type 432



Type 434



X = fixing dimension

Dimensions in mm